

B.T. innovation GmbH, 39116 Magdeburg, Germany

Shuttering system quickly set and flexibly usable

The use of the UniForm® shuttering system is becoming increasingly popular in the production of sandwich or solid elements. Bisoton B.V., based in Ede in the Netherlands, has opted for the system to expand its production. The shuttering system convinces with its usable flexibility and speed in the production process.

"Why don't we make it easier?" That was the question a plant manager in Canada asked a BT innovation product manager a few years ago. He meant the immense consumption of formwork timber and strips in production with recurring element heights. A short time later, the Magdeburg-based company presented a new shuttering system. The result: UniForm, a permanently usable steel formwork facing with a screwing mechanism at the rear. The advantage is the quick change on the MultiForm shuttering carrier. The system can in turn be precisely positioned with the MagFly® AP shuttering magnet and fixed to the formwork table. In short: a system with acceleration potential in production.

No sawing, unscrewing and throwing away

Savings potentials are particularly evident in productions with recurring element heights. Cuttings made of wood must be made and finally mounted on the carrier system or

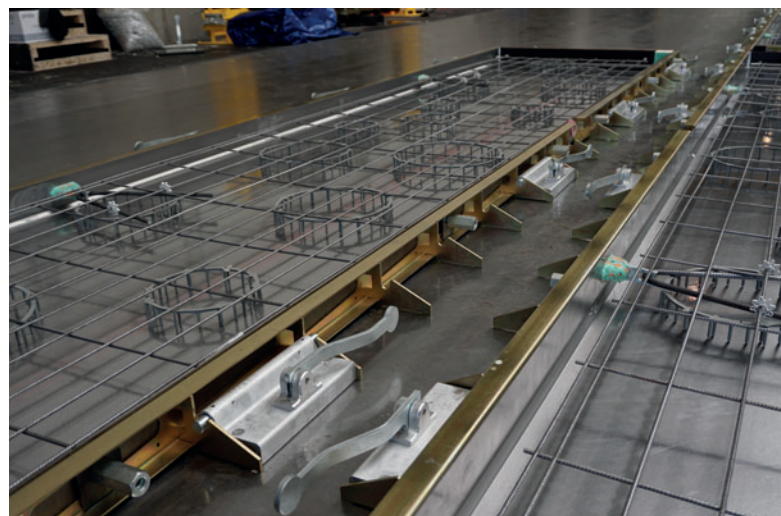
completely assembled on the formwork table. The number of concretings varies depending on the quality of the formwork timber used. This is where the BT shuttering system comes in. Easy to move carriers are positioned. The steel formwork facing is fixed to the carrier by means of screws: No sawing, unscrewing and throwing away of worn formwork timber strips. UniForm shuttering sheets also offer visibly clean and straight chamfer formations on the element.

Modern circulation plant at the Ede site near Arnhem

At the beginning of the year, Bisoton commissioned BT innovation to produce UniForm shuttering in four different heights. Bisoton was founded in 2012. Against the background of existing business relationships between the company founders and high demand from the agricultural sector, a modern circulation plant was put into operation at the Ede site near Arnhem in 2013. Insulated and solid prefabricated concrete walls for industrial, logistics and agricultural construction are manufactured in a production hall of approx. 7,000 m². The range consists of a large number of prefabricated wall elements. Special processes also enable decorative surfaces with brick and pebble optics. Concrete colours and special paintwork round off the range.



UniForm bolted shuttering sheet on MultiForm shuttering carrier: The shuttering was fixed with MagFly AP magnets.



Shuttering assembly using BT innovation's shuttering carrier system (combination of MultiForm, UniForm and MagFly AP) on the tilting table.



Finished sandwich elements made with the BT shuttering carrier system.

Tilting table production with flexibly usable shuttering

The high utilisation of the plant and the demand for special and custom elements with high preparatory expenditure prompted the management to put an adjacent production hall into operation in 2019. In order to absorb production peaks from the circulation hall and to focus on labour-intensive projects, the decision was made in favour of tilting table production with flexibly usable shuttering. Standard heights from 100 to 350 mm should be covered. It was important to the production management to be able to use lightweight shuttering carriers that could be moved and set by hand to speed up the entire production preparation process. The shuttering system must also be suitable for mechanical smoothing of the elements.

The BT shuttering system met the requirements and was planned and supplied by the Dutch partner Hakron-Terwa as part of the equipment for four 25 x 5 m tilting tables. The advantages in the manufacturing process quickly became apparent after the start of production. The fast assembly of the shuttering as well as the quick setting and activation of the MagFly AP shuttering magnets ensure measurable time savings. The carriers can be quickly fitted with UniForm shuttering sheets or exchanged. The chamfers convince with a high precast element quality and, last but not least, the consumption of formwork timber could be reduced. At the same time, this also means a noticeable reduction in disposal costs and thus more environmentally friendly production. ■

FURTHER INFORMATION



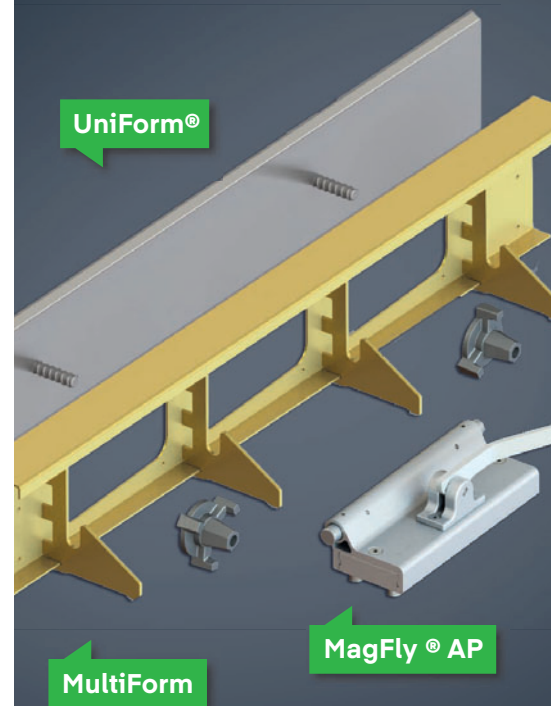
BT innovation
Sudenburger Wuhne 60, 39116 Magdeburg, Germany
T +49 391 73520, F +49 391 735252
info@bt-innovation.de, www.bt-innovation.de

UniForm® Formwork System

The reusable steel
formwork facing

With integrated chamfer, incl.
fastening system

For use with the MultiForm
formwork girder and the
MagFly® AP shuttering magnet



- FLEXIBLE HEIGHTS
- QUICK TO INSTALL
- REUSABLE