

B.T. innovation GmbH, 39116 Magdeburg, Germany



# New formwork system for the demanding projects of Betont GmbH

BETONT® GmbH, based in Halle (Westphalia), specialises in the production of aesthetic, handmade design elements made of concrete. In this context, the company was looking for a solution that would facilitate creating formwork in their precast production facility and generate greater savings on time when implementing their demanding projects. Their decision was taken in favour of a formwork system from B.T. innovation GmbH (BT). The system is a combination of MagFly® AP shuttering magnets in conjunction with MultiForm shuttering supports. This formwork system can be extended with the range of various anchor strip magnets, PE triangular strips and BT magnet holders.

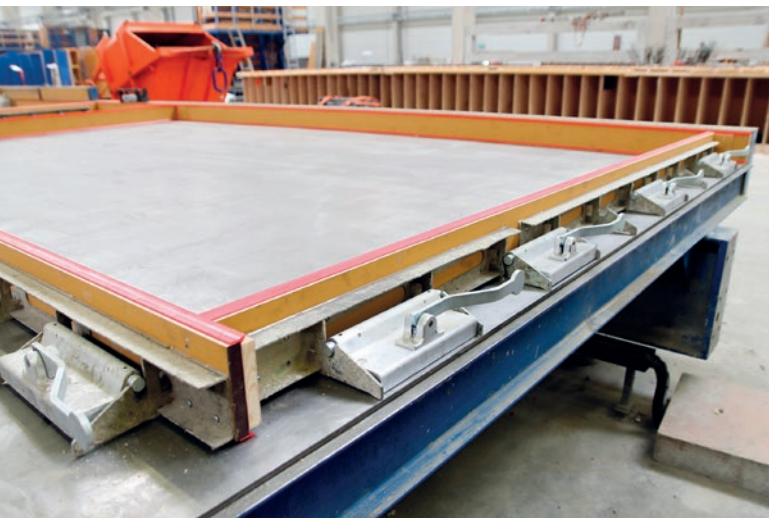
The multifunctional BT formwork system has not only won over Betont GmbH but is also in demand internationally from the precast concrete industry. Its high precision and, at the same time, impressive lightness make it universally applicable; it can be utilised, for example, in manufacturing sandwich and solid walls. The system additionally enables balcony and platform slabs as well as support systems to be produced.

After first applications in their projects, Betont GmbH has decided to use the magnet and formwork technology exclusively from BT innovation. Alongside the high quality of the products, managing director Jerome Rasfeld also emphasises



*Betont GmbH company building in Halle (Westphalia)*

the good price-performance ratio, punctual delivery and excellent advice provided by external sales staff. Besides this, “the ease of handling facilitates the shuttering and stripping process, so that we have been able to optimise our workflows”, confirm Mr Arca and Mr Waletzko, employees in the production department.



*BT formwork system setup*



*Illustration of the formwork system with reinforcement and an additional recess*

for faster  
construction

*"The ease of handling with the magnet and shuttering technology from BT innovation facilitates the shuttering and stripping process, so that we have been able to optimise our workflows."*



*Peter Arca and Thomas Waletzko - foremen in the production department for structural precast reinforced concrete elements at Betont GmbH*

### Flexibility in production thanks to individual shaping

The ability of creating individual shaping was a further reason for this decision. The BT formwork system consists of numerous modules that can be customised. Different heights can be created with this system and the distance between the magnets can be determined by the user.

In addition, the formwork supports can be combined with a wide variety of formwork faces - they can be of wood, steel or plastic - that allow even greater design freedom and further application possibilities in the construction industry. Window and door recesses can also be planned alongside the MultiForm formwork supports for long or short formwork.

### MagFly AP - the BT formwork system centre piece

The magnet has a very high bonding force to mass ratio with a bonding force of 2.2 t and a mass of only 5.4 kg. Thanks to an integrated adapter, the magnet system provides very high compatibility with the MultiForm formwork support system. The MagFly AP's special feature is its patented foot and spring system in the magnet body that allows it to literally glide over the shuttering table and enables fast and precise positioning of the entire formwork support.

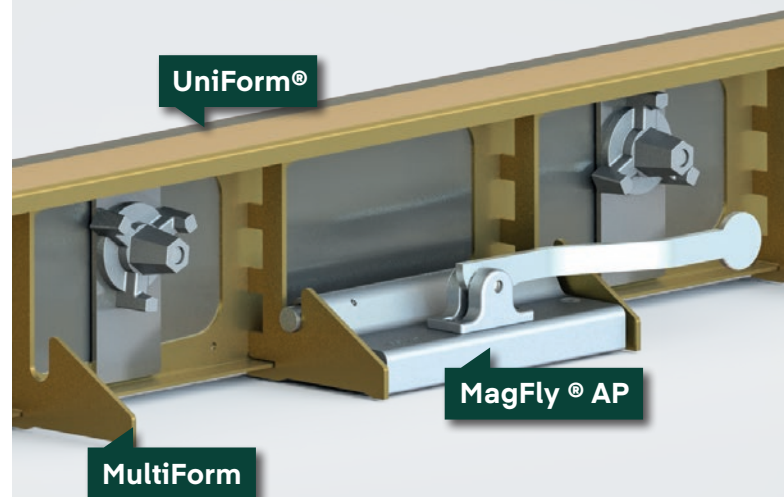
The magnet can be enabled by light pressure from above and disabled by a lever on the side. When the magnets are activated, the joint between the shuttering table and formwork unit can be immediately sealed by additionally attaching a PE triangular strip to the formwork unit. This means that subsequent sealing with silicone is not necessary and concrete "bleeding" can be prevented.

**B.T. INNOVATION GMBH**

## BT - FORMWORK SYSTEM

**COMBINES THE ADVANTAGES OF THE MULTIFORM FORMWORK BEAM AND THE MAGFLY® AP MAGNET:**

- ✓ **PRECISE POSITIONING,** THANKS TO THE PATENTED MAGFLY® TECHNOLOGY
- ✓ **HOLDING DOWN OF SHUTTERING,** THEREFORE HIGH CONTACT PRESSURE OF SHUTTERING TO FORMWORK TABLE
- ✓ **CAN BE USED QUICKLY AND ERGONOMICALLY**
- ✓ **UNBEATABLE MAGNETIC FORCE-TO-WEIGHT RATIO OF 22.000N / 5,4KG**
- ✓ **NO SILICONE SEALANT REQUIRED,** BETWEEN THE FORMWORK FACING (UNIFORM®) AND THE FORMWORK TABLE



[www.bt-innovation.de](http://www.bt-innovation.de)





Inner view of the BT formwork system



Overall view of finished formwork before concreting



Integrating window and door recesses in the formwork with the aid of a MultiForm formwork support and MagFly AP

Betont GmbH is delighted with the BT formwork system. Their precast concrete elements are manufactured using cutting-edge systems and technologies, which will in future generate both standard and custom-made products of very high quality. ■



Brief explanation of the formwork system - creating formwork for precast concrete elements quickly and precisely.



FURTHER INFORMATION

**BETONT** DESIGN AUS BETON

BETONT GmbH  
Ravenna-Park 2  
33790 Halle (Westf.), Germany  
T +49 5201 6614100  
F +49 5201 6614299  
[info@betont.com](mailto:info@betont.com)  
[www.betont.com](http://www.betont.com)



B.T. innovation GmbH  
Sudenburger Wuhne 60  
39116 Magdeburg, Germany  
T +49 391 73520  
F +49 391 735252  
[info@bt-innovation.de](mailto:info@bt-innovation.de)  
[www.bt-innovation.de](http://www.bt-innovation.de)