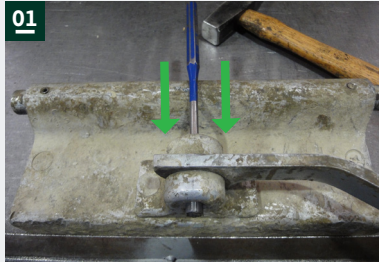


MagFly® AP: Repair of Separation Pins

Note: The following steps should not be done on a steel surface. There is a high risk of injury due to the high magnetic force!

Pictures for Professional Repair



01: Remove dowel pin



02: Remove lever



03: Remove bolt cover



04: Loosen and remove the bolts

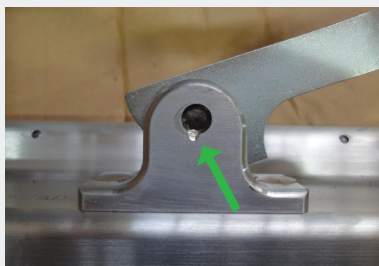


05: Remove the bearing block



06: Dismantle and replace the separation pin

Afterwards the assembly is carried out in reverse order.



Please note:

Set a notch to hold the cylindric pin in position.



Done!

Do you have additional questions?

Watch our video for the repair of a stuck separation pin:



Simply use the camera of your cell phone to scan the QR code.



Edition 06/20 – These repair instructions have been technically revised. Previous issues are not valid, if a new issue has been technically revised, this issue loses its validity. Please make sure that you are in possession of the latest issue.