

Technical Data Sheet – Magnet Type KU

Product Description

The KU magnet is used to hold ballended anchors. Depending on the size of the ballended anchor, we have the right magnet with the optimum holding force. To connect the ballended anchor to the magnet, the matching rubber sleeve is supplied in each case



Product Features

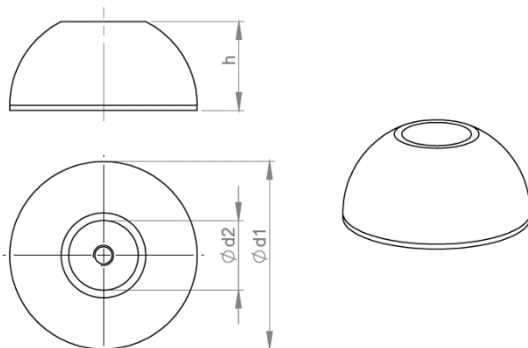
- ::: Combined recess body with magnet
- ::: Internal thread for detaching the magnet
- ::: Solid and stable design due to steel base body, therefore long service life
- ::: Environmentally friendly and cost-effective due to reusability

Areas of Application

- ::: Holding of ballended anchors

Technical Data

Article number	8005072	8005074	8005075		8005076	8005098
Name	KU 13	KU 25	KU 50		KU 75	KU 100
Anchor size	1,3 t	2,5 t	5,0 t		7,5 t	10,0 t
Adhesive force	1.000	1.000	1.500		2.000	2.000
Mass (kg)	0,49	0,65	2,5		3,3	3,3
D1 (mm)	66	74	94,5		118	118
D2 (mm)	20,5	27,5	38,5		48,5	48,5
H (mm)	30,8	33	50,5		53	53



The information in this data sheet was provided with care based on our experience and the respective known state of science and technology but is non-binding. They are to be adapted to the respective building object, intended use and the special local stresses. Provided that this is the case, we ask you to understand that we limit our liability for the information given in this data sheet and accept no liability in the event of intent, gross negligence or infringement of the instructions. In any case, the recognised rules of technology must be observed.

Edition 05/19 - This data sheet has been technically revised. Previous editions are invalid. If a new edition has been technically revised, this edition loses its validity. Please check whether you are in possession of the current edition.